

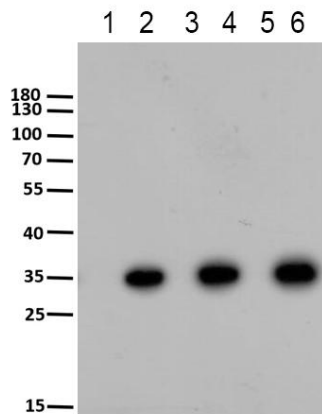


# DDDDK-Tag(binds to flag sequence) mouse mAb(12M11)

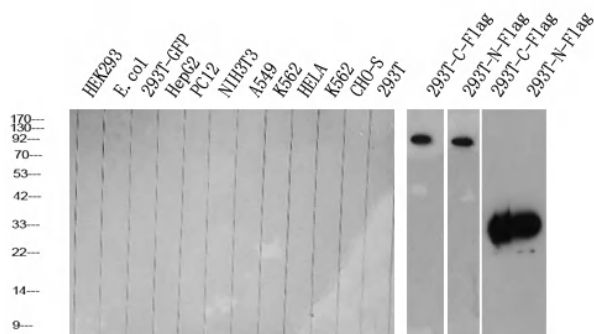
<b>Catalog No</b>	YP-Ab-17217
<b>Isotype</b>	IgG
<b>Reactivity</b>	Species independent
<b>Applications</b>	WB;ELISA;IP;IF;CoIP
<b>Gene Name</b>	Flag tag; Flag-tag,DDDDK TAG, DDDDK-TAG, DYKDDDDK tag,DYKDDDDK-tag
<b>Protein Name</b>	
<b>Immunogen</b>	Synthetic Peptide of Flag-Tag
<b>Specificity</b>	The antibody detects C-terminal, internal, and N-terminal Flag-tag fusion proteins.
<b>Formulation</b>	PBS, pH 7.4, containing 0.5%BSA, 0.02% sodium azide as Preservative and 50% Glycerol.
<b>Source</b>	Mouse VH IgG1 and VL Kappa was expressed from 293F cells
<b>Purification</b>	Protein A purified
<b>Dilution</b>	WB: 1:10000-50000 ELISA 1:20000-50000 IP:100-1:200 IF: 1:1000 -3000
<b>Concentration</b>	1 mg/ml
<b>Purity</b>	≥90%
<b>Storage Stability</b>	-20°C/1 year
<b>Synonyms</b>	
<b>Observed Band</b>	
<b>Cell Pathway</b>	
<b>Tissue Specificity</b>	
<b>Function</b>	
<b>Background</b>	The DYKDDDDK peptide (Flag-tag) is a polypeptide protein tag that can be added to a protein using recombinant DNA technology. It can be used for affinity chromatography, and then used to separate recombinant, over expressed protein from wild-type protein expressed by the host organism. It can also be used in the isolation of protein complexes with multiple subunits.
<b>matters needing attention</b>	Avoid repeated freezing and thawing!
<b>Usage suggestions</b>	This product can be used in immunological reaction related experiments. For more information, please consult technical personnel.



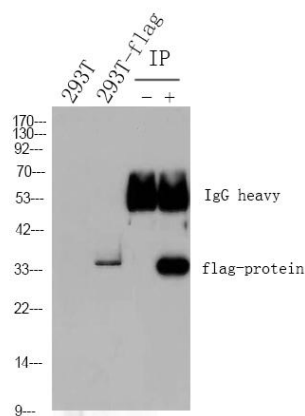
## Products Images



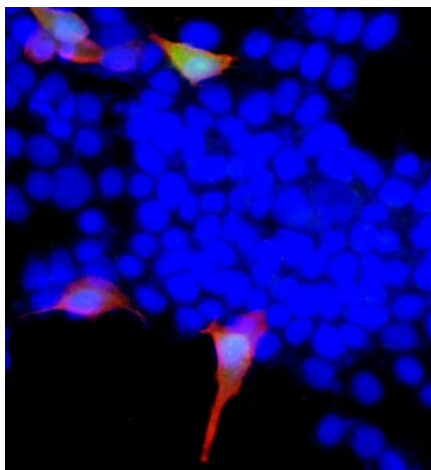
Western Blot analysis of 293F cells transfected or non-transfected DDDK-tag expression vector by primary antibody at 1:10000 dilution. Lane 1 3 5: 293F cell lysis. Lane 2 4 6: transfected DDDK-tag expression vector. Secondary antibody(catalog#:RS23920) was diluted at 1:10000



Western Blot analysis of various cells using primary antibody at 1:10000 dilution. Secondary antibody(catalog#:RS0001) was diluted at 1:10000



1) Input: 293T transfected N-flag protein Lysate 2) IP product: IP dilute 1: 200, 293T transfected N-flag protein Lysate Western blot analysis: primary antibody : 1:10000 Secondary antibody: Goat anti-Mouse IgG(RS0001), 1: 5000



Immunofluorescence analysis of 293T transfected FLAG and GFP tag protein. 1, FLAG primary Antibody(red YM3808) was diluted at 1:1000(4°C overnight), GFP primary Antibody(green YN5582) was diluted at 1:1000(4°C overnight),